

Emily Y. Horton

116 Lee Ave. Unit 502, Takoma Park, MD 20912 • emilyhorton.connect@gmail.com • (706) 296-5053

EDUCATION

Ph.D., Integrative Conservation and Anthropology. University of Georgia (UGA). 2020.

- Social science training in collaborating and communicating across disciplines and sectors to conduct research that addresses pressing global conservation challenges.

B.S., Environmental Science and Communications/Personalized Program. Univ. of South Alabama. 2004.

- Designed academic program to pursue professional vision by blending environmental science, communications, and Spanish courses tailored for work in Latin America.

Spanish and Portuguese Language and Cultural Programs (study abroad).

- Universidad Veracruzana. Xalapa, Veracruz, México. 2002.
- Universidade do Sul de Santa Catarina. Florianópolis, Santa Catarina, Brazil. 2015.

PROFESSIONAL EXPERIENCE

2020 - 2021. Partnership Specialist/Knauss Marine Policy Fellow. NOAA National Sea Grant Office. MD.

- Engage supervisory team and staff to evaluate, strengthen, and forge new partnerships in support of Sea Grant's mission to enhance the practical use and conservation of coastal, marine and Great Lakes resources.
- Foster and facilitate intra and inter-agency collaborations, including with the U.S. Dept. of Energy (renewable energy), U.S. EPA (water quality), UN Decade of Ocean Science, and the U.S. Forest Service.
- Consult state and national-level stakeholders to strengthen & harness the power of Sea Grant alumni networks.

2018 - 2019. Social Media & Event Coordinator (Research Assistant). ICON Program. Univ. of Georgia. GA.

- Managed and created audience-appropriate content for social media account representing UGA's Center for Integrative Conservation Research. Organized interdisciplinary professional development events.

2017 - 2018. Graduate Teaching Assistant. Department of Anthropology. Univ. of Georgia. GA.

- Provided pedagogical support, including assignment review and tutorial assistance, to 40 undergraduates.

2016 - 2017. Fulbright Scholar. U.S. Dept. of State. Marine Extractive Reserve Cururupu. MA, Brazil.

- Conducted 13 months of qualitative and quantitative research drawing from social sciences, natural sciences, and visual arts to explore the socio-ecological dimensions of small-scale fisheries governance in a marine protected area.
- Analyzed marine resource management and policy impacts on wellbeing, sustainability, gender equity, and social inclusion outcomes, giving particular attention to local ecological knowledge and food security.
- Taught bilingual interdisciplinary classes at host university to promote international scientific & cultural exchange.
- Applied findings to inform policy discussions through federal agency collaboration.
- Organized community photography exhibits with local support to disseminate study findings in an inclusive and engaging manner.

2015. *Federal Intern.* Chico Mendes Institute of Conservation & Biodiversity. Marine Reserve Pirajubaé. Brazil.

- 100 hour internship in marine reserve with federal agency (ICMBio) overseeing national protected areas system.
- Co-authored conference paper with ICMBio mentor on gender, equity, and fisheries in reserve.
- Assisted staff in participatory research, Slow Food Brazil collaborations, and co-management meetings.

2012 - 2015. *Graduate Teaching Assistant.* Department of Anthropology. Univ. of Georgia. GA.

- Assisted teaching Introduction to Anthropology, Cultures of South Asia, Consumption and Globalization, and Integrative Conservation to undergraduate and graduate students.
- Responsibilities included grading, leading exam reviews, assisting with lectures, proctoring exams, and providing student support during office hours.

2010 - 2011. *Grant Writer and International Relations Official.* Nonprofit Guyra. Paraguay.

- Obtained \$US 153,000 in funding writing 14 grants in collaboration with natural and social scientists, Indigenous leaders, protected area managers, and GIS specialists.
- Served as international liaison and English/Spanish translator for foreign guests and donors.

2009 - 2010. *Environmental Scientist.* Alabama Department of Environmental Management. AL.

- Developed educational and outreach materials for Alabama's first recycling grant program.
- Evaluated, awarded, and managed million-dollar grant program with small team.
- Doubled agency's internal recycling program.
- Monitored and documented Deepwater Horizon oil spill via land and aerial photography in Gulf Shores, AL.

2007 - 2009. *Environmental Photographer.* Nonprofit Guyra. Pantanal & Atlantic Forest Focus. Paraguay.

- Partnered with leading environmental nonprofit, *Guyra Paraguay*, to publish first bilingual photography publications (English and Spanish) on Paraguay's portion of Pantanal wetland and Atlantic Forest.
- Internationally disseminated publications to garner public, policymaker, and donor support for conservation initiatives and protected areas.

2008. *Beekeeper and Product Developer.* Greenbrier Honey Farm. AL.

- Assisted small-business (200 hives) with beekeeping activities and created business website.
- Researched and developed beeswax-based lip balm and pollen product line.

2004 - 2007. *Environmental Educator.* U.S. Peace Corps in Latin America. Paraguay.

- Collaborated with community, government, nonprofit, and educational institutions to address pressing socio-environmental needs in the buffer zone of a controversial protected area.
- Co-developed K-12 environmental education lessons and activities adapted to national curricula requirements.
- Secured grant funding for under-served schools to visit national parks and obtain first institutional computers.
- Facilitated formation and strengthening of environmental groups, including a youth club and fire brigade.
- Supported partnerships between nonprofits and communities, resulting in a village reforestation project and environmental education festival.

AWARDS

- **2019.** Sea Grant Knauss Marine Policy Fellowship finalist. One year (2020-2021) paid fellowship in D.C.
- **2019.** Department of Anthropology Travel Award. U.S. International Association for Landscape Ecology (US-IALE) symposium. Fort Collins, CO. \$300
- **2019.** US-IALE Student Award. US-IALE symposium. Fort Collins, CO. \$150
- **2019.** UGA Graduate Travel Grant. Society for Applied Anthropology conference. Portland, OR. \$1,775
- **2019.** UGA ICON/CICR Travel Grant. Society for Applied Anthropology conference. Portland, OR. \$300
- **2018.** U.S. Borlaug Summer Institute on Global Food Security, two week fellowship. Purdue University, Indiana.
- **2018.** UGA Graduate School Travel Grant. Dimensions of Political Ecology Conference. Lexington, KY. \$325
- **2017.** Kickstarter (crowdfunded) award for carrying out community photography exhibit to disseminate research results in an inclusive and engaging manner. \$637
- **2015.** Fulbright U.S. Scholar Award for 2016 - 2017 dissertation research in Brazil. Bureau of Educational Affairs, U.S. Department of State. \$16,100
- **2015.** Foreign Language and Area Studies Fellowship for Intensive Portuguese study in Florianópolis. UGA's Latin American & Caribbean Studies Institute and U.S. Department of Education. \$7,500
- **2014.** Tinker Foundation-UGA Graduate Field Research Award for pre-dissertation research in Brazil. UGA's Latin American & Caribbean Studies Institute & Tinker Foundation, Inc. \$3,412.50
- **2014.** Innovative & Interdisciplinary Research Grant (pre-dissertation work, Brazil). UGA Grad School. \$575

PUBLICATIONS

Silva, J. S.; Azevedo, B.R.M.; Cutrim, A.S.T.; Silva, D.B.; Freitas, L.C.; Farias Junior, L. F.S.; Guimarães, R. F.; Ribeiro, T.C.G; Santana, T.C.; Campos, V.C.S.; **Horton, E. Y.**; Carvalho-Neta, R.N.F. (2016). *As Questões Éticas Envolvidas em Pesquisas nas Comunidades Pesqueiras: O Uso do Termo de Consentimento Livre e Esclarecido*. In Metodologias e pesquisas em recursos aquáticos e pesca: uma guia prática. Carvalho-Neta, R.N.F.; Almeida, Z.S.; Santos, D.M.S. (Org.). Pp. 221 - 230. São Luís: UEMA.

Santin, L. and **Horton, E.Y.** (2015) *Extractivist Women in Marine Reserve Pirajubaé: Challenges and Possibilities in Valuing Feminine Knowledge and Skills in the Development of Artisanal Fishing Activities*. VII Brazilian Seminar on Protected Areas and Social Inclusion (PASI); II Latin America PASI Gathering. Florianópolis, Brazil.

Carvalho-Neta, R. N. F.; Sousa, D. B. P.; Sobrinho, I. C.M.; **Horton, E. Y.**; Almeida, Z. S.; Tchaicka, L.; Sousa, A. L. (2015). *Genotoxic & hematological parameters in Colossoma macropomum (Pisces, Serrasalminidae) as biomarkers for environmental impact assessment in a protected area in northeastern Brazil*. Environmental Science & Pollution Research, 1-10.

Bormann, R.; Clause, A.; DePuy, W.; Ganguly J.; Guy, R.; Hallemeier, J.; **Horton, E.Y.**; Manus, S.; Padgett-Vasquez, S.; Unks, R. (2013). *Sea-Level Rise Adaptation and Planning: A Case Study from Tybee Island, Georgia*. Report for Carl Vinson Institute.

Horton, E. (2010). *Gran Pantanal Paraguay*. Asunción. ISBN 978-99953-848-6-9

Horton, E. (2008). *Salvemos San Rafael/Saving San Rafael*. Asunción. ISBN 978-99953-848-1-4

EDITORIAL REVIEW

2020. *World Ocean Assessment II*. Reviewed Chapter 31 draft (Overall Benefits) for science-based report on the state of the world's oceans.

PRESENTATIONS (select)

- Aug. 20, 2020. NOAA Central Library. *Engaging Photography as a Research and Communications Tool in Marine Policy Discussion*. E. Horton. Silver Spring, MD (virtual).
- April 10, 2019. US Regional Association of the International Association for Landscape Ecology (US-IALE). *Art-science Collaboration for Ecology and Conservation* (session). E. Horton. Fort Collins, CO.
- March 20, 2019. Society for Applied Anthropology Annual Meeting. *Fishing, Food, and Governance: Balancing for Equity and Sustainability* (session). E. Horton. Portland, OR.
- February 1, 2019. Symposium on Integrative Conservation. *Small-scale Fisheries Governance and the Search for Well-being and Sustainability in a Brazilian Marine Protected Area*. E. Horton. University of Georgia (UGA). Athens, GA.
- September. 24, 2018. Integrative Conservation Seminar. (ICON 8001). *Small-scale Fisheries Governance Through Multiple Lenses: Well-being, Sustainability, and Justice in a Brazilian Marine Protected Area*. E. Horton. UGA (GA).
- August 24, 2018. Integrative Conservation Orientation. *Internship Experience & Outcomes*. E. Horton. UGA (GA).
- April 20, 2018. Fulbright Information Session. *Fulbright Experience: Tips for Applying*. E. Horton. UGA (GA).
- February 24, 2018. Dimensions of Political Ecology Conference. *Art-Science-Environment linkages in research. Crossing Fields & Sparking Interest with Art:Science* (session). E. Horton. University of Kentucky. Lexington, KY.
- January 26, 2018. Symposium on Integrative Conservation. *Small-scale Fisheries Governance and the Search for Well-being and Sustainability in a Brazilian Marine Protected Area*. E. Horton. UGA (GA).
- March 20, 2017. Marine Extractive Reserve Cururupu Advisory Council Meeting. *Preliminary anthropological research results*. E. Horton. Disseminated 2016 - 2017 fieldwork findings in advisory council meeting. Brazil (MA).
- October 25, 2016. Marine Extractive Reserve Cururupu Advisory Council Meeting. *Preliminary anthropological research results*. E. Horton. Updated advisory council on 2016 - 2017 fieldwork status and outcomes. Brazil (MA).
- January 29, 2016. Symposium on Integrative Conservation. *Small-scale Fisheries Governance and the Search for Wellbeing and Sustainability in a Brazilian Marine Extractive Reserve*. E. Horton. UGA (GA).
- September, 2015. Marine Extractive Reserve Cururupu Advisory Council Meeting. *Preliminary anthropological research results*. E. Horton. Presented 2014 pre-dissertation research to council prior to fieldwork. Brazil (MA).
- August 22, 2015. Integrative Conservation Orientation. *Grant Writing: Experience and Tips*. E. Horton. UGA (GA).
- March 26, 2015. Society for Applied Anthropology Annual Meeting. *Socioecological Dimensions of Small-scale Fisheries Governance in a Brazilian Marine Extractive Reserve*. E. Horton. Pittsburgh, Pennsylvania.
- February, 2015. Symposium on Integrative Conservation. *Socioecological Dimensions of Small-scale Fisheries Governance in a Brazilian Marine Extractive Reserve*. E. Horton. UGA (GA).
- October 8, 2014. Sustainability Guest Lecture. *Socioecological Dimensions of Sustainable Fisheries Governance in a Brazilian Marine Extractive Reserve*. E. Horton. Hispanic Heritage Month. University of South Carolina. SC.
- February 6, 2014. Symposium on Integrative Conservation. *Socioecological Dimensions of Sustainable Fisheries Governance in a Brazilian Marine Extractive Reserve*. E. Horton. UGA (GA).
- April 10, 2013. Georgia Water Resources Conference. Integrative Conservation student representative on panel discussion: *Impacts of Sea-level Rise on Tybee Island, Georgia*. E. Horton. UGA (GA).

LANGUAGES

English (native) • Spanish (advanced) • Portuguese (advanced) • Paraguayan Guarani (beginner)

CROSS-CULTURAL EXCHANGE

2011, Ache ethnicity. Upper Parana Atlantic Forest Ecoregion, Paraguay. Visited Kuetuvy community to learn about organic, shade-grown yerba mate being cultivated for export in community's reserve.

2010, Ayoreo ethnicity. Dry Chaco Ecoregion, Paraguay. Conducted interview with Ayoreo activist on Indigenous and Occidental perspectives on protected areas and threats facing Ayoreo groups living in voluntary isolation.

2010, Guarani Ñandeva ethnicity. Dry Chaco Ecoregion, Paraguay. Interviewed leaders on community and relation to land use and natural resources. Visual ethnography of harvesting of traditional cultural foods (bromeliad and tuber).

2008, Yshir ethnicity. Pantanal Ecoregion, Paraguay. Visual ethnography of traditional ceremonies. Conducted interviews with shamans and leaders regarding intergenerational knowledge and cultural practices linked to natural resources. Distributed DVDs to leaders containing film footage, which communities used to highlight land tenure needs in the media.

2007, Mbya Guarani ethnicity. Upper Parana Atlantic Forest Ecoregion, Paraguay. Conducted interviews with leaders from communities located in or surrounding federally protected area on relationship with reserve and natural resources.

INSTITUTIONAL DIVERSITY, EQUITY, & INCLUSION (select)

2020. Justice, Equity, Diversity, and Inclusion (JEDI) Committee of Knauss Marine Policy Fellows. Collaborate with colleagues to lead DEI initiatives and create safe, supportive, and inclusive space for diverse fellows.

2020. Speaking Up: How Bystanders Can Change the Conversation in STEM training. American Geophysical Union workshop "to support developing strategies for reducing social harassment in academia and other places where scientists work."

2019. [Gender and Fieldwork Symposium](#). Communications Coordinator for interdisciplinary symposium aimed at providing resources and support for safely navigating gender and sexuality in fieldwork.

2019. New Approaches to Graduate Recruitment in Ecology, Evolution, & Environmental Science. Served on panel for event supported by the President's New Approaches Initiative to promote and institutionalize a diverse and inclusive environment.

2019. Embedding Justice and Equity in Organizations. North American Association of Environmental Education. Angela Pari. Webinar training on "making social justice & equity hallmarks of progressive advocacy, policymaking, philanthropy, & business."

2018. Safe Space Certification. University of Georgia's LGBT Resource Center. Completed training on gender and sexual identity, homophobia, hetero-sexism, and how university affiliates can support and be allies for the LGBTQ community.

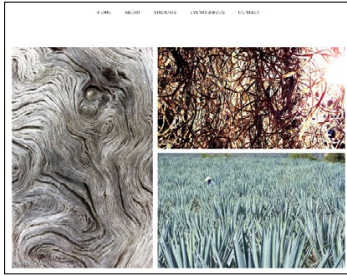
MULTILATERAL EXPERIENCE

2020. North American Marine Protected Areas Network (NAMPAN) Trilateral Consultation coordinated by the UN Environment Programme. Provided documentation and translation support to federal agency staff participating in NAMPAN workshops, which brought together stakeholders from Canada, Mexico, and the United States to identify marine protected area challenges and increase transnational collaboration to address them.

MULTIMEDIA EXPERIENCE

WEBSITE DEVELOPMENT

Integrative Conservation Graduate Student Organization



Greenbrier Honey Farm



PHOTOGRAPHY

EXHIBITS

2017. Organized Kickstarter funded community photography exhibit in (marine) Extractive Reserve Cururupu to disseminate preliminary research results to host communities in an inclusive and engaging format.

2011. *Celebrating the Biodiversity of Paraguay*, International Traveling Photography Exhibit (Paraguay & US). Collaboration between Guyra Paraguay, Moises Bertoni Foundation, Embassy of Paraguay, & Paraguay-Kansas Committee.

2008. *San Rafael, More Than a Reserve, a Compromise*. Organizers: Citibank, Guyra Paraguay, Peace Corps Paraguay, the Paraguayan Secretariat of Tourism & Environment, and the United Nations. Asunción, Paraguay.

PUBLICATIONS WITH WORK FEATURED (select)

National Audubon Society

- 2015. *International Birding and Ecotourism*. Online article.
- 2009. *International Alliances Program Field Report*. Washington, DC.



Biomes and Ecosystems (Encyclopedia). 2013. Editor: Robert Warren Howarth, Cornell University. Assistant Editor: Jacqueline Mohan, University of Georgia.

United Nations Development Programme (UNDP). 2009. *Pueblos Indígenas. Tres historias. Un compromiso*. Paraguay. International Union for Conservation of Nature (IUCN), National Committee of the Netherlands. 2009. Magazine distributed to IUCN members, NGOs, and policymakers in the Netherlands.

Paraguayan Ministry of Tourism. 2009. Birdwatching brochure for national & international dissemination. Paraguay.

GRAPHIC DESIGN

Logo for Integrative Conservation
Ph.D. Program, UGA



ICON logo used for
fundraising & promotion



Postcards for Paraguayan biodiversity photo exhibit.

MUSICAL COLLABORATIONS

2018. Live performance to raise funds for Broad River Watershed Association (non-profit). 40 Watt Club. Athens, GA.

2015. Original music used in socio-environmental documentary, [Fishermen's Right to Know](#), by Natasha Raheja.

2011. Worked with non-profit Coosa Riverkeeper to create soundtracks for public outreach videos.



CREATIVE LEADERSHIP AND SERVICE

2020. *Co-founder*. *Knauss Fellows for Organized Resilience Efforts* (FORCE) working group and the *Knauss Connector* alumni-fellows newsletter.
2020. *Alumni Networking Volunteer*, Professional Development Committee. Knauss Marine Policy Fellowship.
2020. *Mentor*. Sea Grant Community Engaged Internship program for underrepresented and Indigenous students.
2020. *Citizen Organizer*. Sligo Creek 2020 Stewardship Clean Up. Takoma Park, MD.
2019. *Food Server*. Blanchet House (nonprofit social services organization). Portland, Oregon.
2019. *Graduate Mentor*. Integrative Conservation PhD Program. UGA, GA.
2018. *Co-Facilitator*. Arts and Environment workshop. Integrative Conservation Conference. UGA, GA.
2018. *Music Organizer and Performer*. Symposium on Integrative Conservation (ICON). UGA, GA.
2018. *STEMzone Face Painter*. Interactive science outreach event organized by Office of STEM education. UGA, GA.
- 2017 - 2018. *Website Coordinator*. Developed first website & logo for ICON PhD student organization. UGA, GA.
2017. *Fulbright Review Panel/U.S. Student Fulbright Campus Committee Member*. UGA, GA.
2017. *Logo Designer*. For Integrative Conservation Graduate Student Organization (OINC). UGA, GA.
2017. *Undergraduate Mentor*. Anthropology Graduate Student Organization. UGA, GA.
2016. *Event Coordinator*. BRICAn't Stop Me: Prevention and Early Detection of Hereditary Cancers. UGA, GA.
2015. *Musical Composer*. For environmental nonprofit & documentary, Fishermen's Right to Know (Natasha Raheja)
- 2014 - 2015. *Logo Designer*. For UGA ICON Ph.D. Program and the Southern Anthropological Society conference.
2014. *Audiovisual Committee Chair*. Symposium on Integrative Conservation. UGA, GA.
- 2013 - 2014. *Treasurer*. Anthropology Graduate Student Association (AGSO). UGA, GA.
- 2012 - 2014. *Board Member*. Non-profit Coosa Riverkeeper (watershed conservation focus). Birmingham, AL.

Emily Y. Horton

emilyhorton.connect@gmail.com

(706) 296-5053

